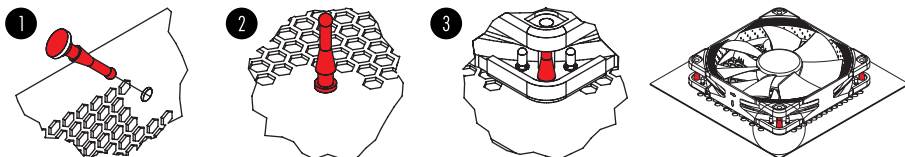


Installation

When installing the NF-B9 on a heatsink or radiator, please use the mounting mechanism supplied with your heatsink or radiator (fan clips, screws, etc.) as described in the respective manual.

When installing the NF-B9 as a case fan, you can either use proprietary clip systems (if your case features a clip system for fan installation) or the supplied mounting screws and silicone anti-vibration mounts. In order to install the fan using the silicone mounts, please first pull the silicone mounts through the mounting holes of the case. Then put the fan onto the silicone mounts and pull them through the mounting holes of the fan:



Scan this code to display
multi-lingual manuals on
your mobile phone.

Connection

The NF-B9 comes with a 4-pin PWM fan connector for fully automatic speed control via your mainboard's 4-pin PWM fan headers. Please note that the fan can also be connected to your mainboard's 3-pin fan headers though. When connected to 3-pin fan headers, the NF-B9 will run at full speed (unless the mainboard supports voltage based speed control).

If you're using multiple NF-B9 fans, you can use the supplied y-cable (NA-YC1) to connect several fans to one PWM fan header. This way, your mainboard will set all the connected fans to run at the same speed.

The NF-B9 features a short 20cm primary cable in order to help you minimise cable clutter in typical applications. If you need a longer cable, please add the supplied 30cm extension (NA-EC1). The NF-B9 comes with a Low-Noise Adaptor (NA-RC6) that allows you reduce the fan speed from 1500 to 1200rpm. You can either use the adaptor to set the fan to a fixed speed of 1200rpm (if speed control is deactivated) or to cap the maximum speed to 1200rpm during PWM speed control.

Cleaning and Maintenance

Fans inside computer cases tend to accumulate dust over longer periods of usage. In order to maintain maximum performance, please clean your fans regularly using a duster, slightly moist tissue or canned air. Please be careful not to use too much force in order to prevent any damage to the fan. Please don't use a vacuum cleaner as this may apply excessive force to the fan.

In order to ensure flawless operation over many years of usage, the NF-B9's premium grade SS02 bearing is fully sealed to prevent the entering of fine dust particles. Please note that the fan is not designed to be taken apart by the user. Removing the impeller from the frame will break the sealing of the bearing and results in a loss of warranty.

Warranty and Support

Even with high-grade products and strict quality control, the possibility of defects cannot be eliminated entirely. Therefore, we aim at providing the highest possible level of reliability and convenience by offering a warranty period of 6 years and direct, fast and straightforward RMA service.

Should you encounter any problems with your NF-B9, please don't hesitate to contact our support team (support@noctua.at).



www.noctua.at

geräuschoptimierte Premium-Komponenten
sound-optimised premium components

Designed in Austria, Noctua's premium cooling components are internationally renowned for their superb quietness, exceptional performance and thoroughgoing quality. Having received more than 1000 awards and recommendations from leading hardware websites and magazines, Noctua's fans and heatsinks are chosen by more than a hundred thousand satisfied customers around the globe. Mail: sales@noctua.at | Web: www.noctua.at



Dear customer,

Congratulations on choosing the Noctua NF-B9 PWM. This fan is the result of over two years of intensive development and our engineers have worked hard to create what is perhaps the most technically advanced Noctua fan for pressure demanding applications today. Each fan is double checked for flawless operation by our quality control team before it leaves the factory and I'm confident that you will be able to sense some of the research, attention and care we've put into making this product.

Enjoy your NF-B9!

Yours sincerely,

Roland Mossig, Noctua CEO

This document includes some instructions for installing, running and cleaning your NF-B9. Should you have any further questions, our support team (support@noctua.at) will be glad to assist you at any time.



Please also have a look at the regularly updated FAQs on our website: <http://www.noctua.at/faqs>
This document is also available in other languages at the following URL: <http://www.noctua.at/manuals>